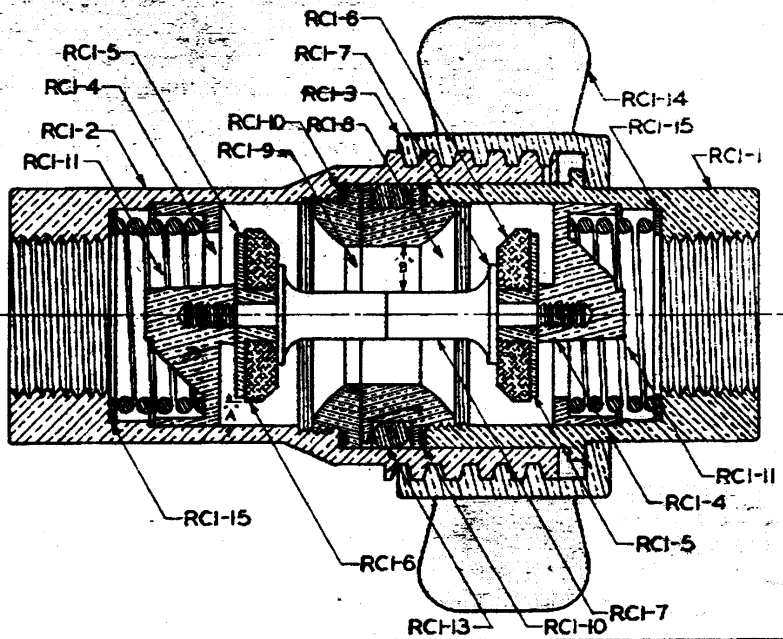


FROM : PAXTON-MITCHELL CO. PHONE NO. : 402 345 6772 Jan. 24 1957 04:05PM P02

NAME OF PART	PART NO.	NO. REQ'D.
MALE END	RCI-1	1
FEMALE END	RCI-2	1
NUT	RCI-3	1
SPOOL	RCI-4	2
" WASHER	RCI-5	2
VALVE	RCI-6	2
" STEM	RCI-7	2
" SEAT-MALE END	RCI-8	1
" " -FEMALE "	RCI-9	1
" " GASKET	RCI-10	2
SPRING	RCI-11	2
NEOPRENE "O" RING 6227-29	RCI-13	1
WING NUT-[OPTIONAL]	RCI-14	1
SPRING RETAINER	RCI-15	2



AREA TUBING	AREA AT 'A'	AREA AT 'B'	LENGTH OVER ALL	WEIGHT LBS.	WIDTH OVER HEX.
.785"	.983"	.794"	5 3/4"	4 1/8	2 3/4"

1/4" PIPE TAP.

<b>PAXTON-MITCHELL COMPANY</b> OMAHA, NEBR., U. S. A.	
<b>QUICK DISCONNECT COUPLING</b> TYPE 2 1" SIZE 1/2" PIPE TAP	
DRAWN BY. A.J.F.	SCALE FULL
TRACED BY.	ORDER NO.
CHECKED BY. GWS	REQ. NO.
REF.	
DATE- 1-7-54	DRG. IPM161

REV.	DATE
"E"	1-7-54

\*E\* REVISD & REDRAWN-A.J.F.