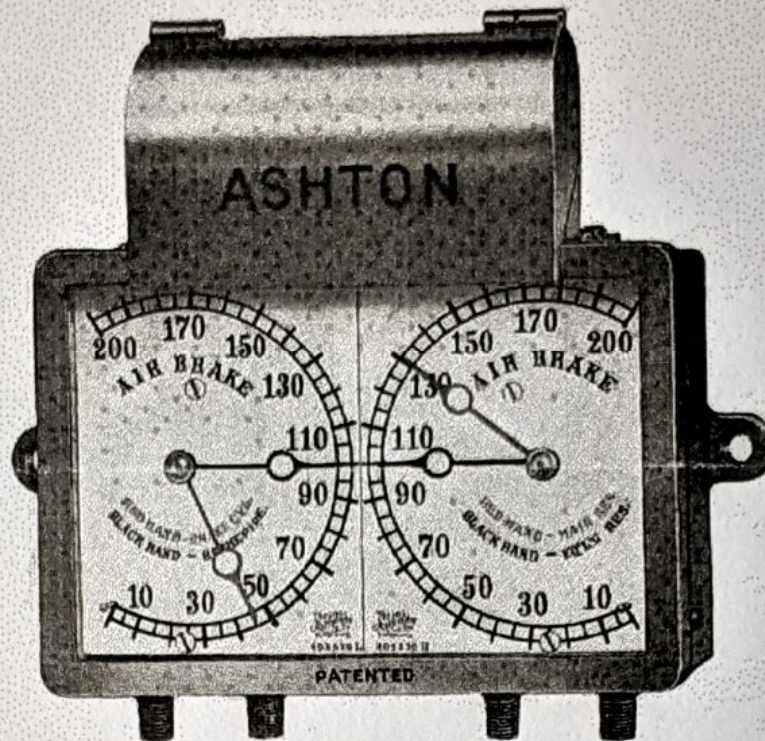


# THE ASHTON QUADRUPLEX AIR BRAKE GAGE with 5 inch Dials

Patented



No. 62-Q-E Style with Electric Light Attachment

The Ashton innovation in gage construction combines two duplex air gages in one case ( $3\frac{1}{2}$ " and 5" sizes ordinarily used) thus producing uniformity in size of dials, one less gage case and economizing space in the locomotive cab.

The principal object of this new design is to place in a centralized position the two air gages and the hands of same as near together as possible, so that the engineer by concentrating his vision particularly on the Brake Pipe and Equalizing Reservoir hands may regulate more uniformly and accurately his brake applications and secure smooth handling of the train.

The illumination of the dials is accomplished by the special enclosed electric light attachment, which prevents diffusion of the light rays over other sections of the cab and thus in no way interferes with the engine men's vision. The electric attachment for No. 62-Q-E gages is designed for a standard cab lamp, S-17 bulb, 15 watts, 34 volts, having standard receptacle with lamp grip, as adopted by A. R. Association, Mechanical Section, 1920.

It is made with 5" dials; in brass case; size  $8\frac{1}{2}$ " x 9" x 4"; weight 14½ lbs.

This gage is furnished without electric light attachment when so ordered and is designated by the No. 62-Q Style; with 5" dials; in brass case; size  $8\frac{1}{2}$ " x  $5\frac{1}{2}$ " x  $3\frac{1}{2}$ "; weight 11½ lbs.

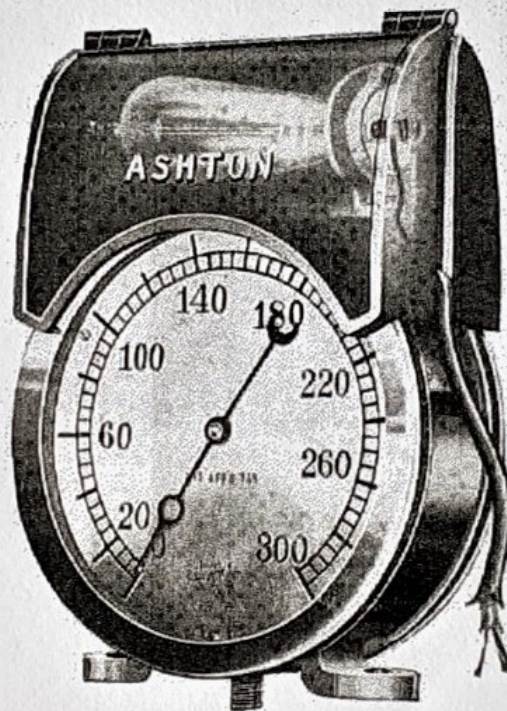
Dials will be graduated to 160 or 200 lbs. as specified, and marked as illustrated above, unless otherwise ordered.

Prices on application.



# THE ASHTON

## IMPROVED DOUBLE DIAL LOCOMOTIVE STEAM GAGES



No. 52 D. I. Style  
With Electric Light Attachment.

Manufactured by

**THE ASHTON VALVE COMPANY**  
161 First Street, Cambridge 41, Boston, Mass.

New York

Chicago

San Francisco

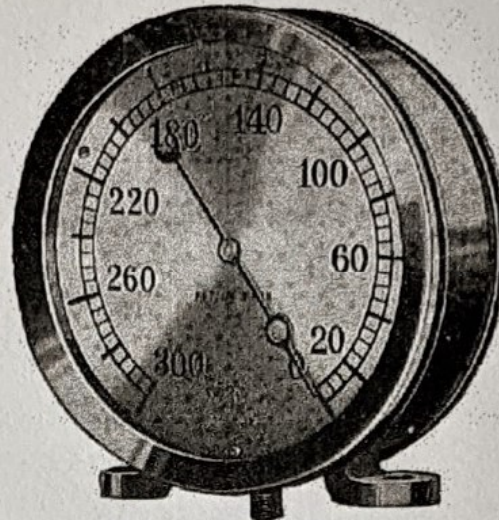


# THE ASHTON

## 6 $\frac{3}{4}$ in. Double Dial Locomotive Steam Gage

### Without Electric Light Attachment

Pat. Applied For



No. 52 D. Style without Light Attachment

The Gage illustrated above is of the same general construction as the No. 52-D I Style as explained on page 2.

This Gage is constructed with two hands, and also two Dials which are opposite and parallel to each other, with the hand working clockwise on one dial, and contra clockwise on the other. The dials are finished either silvered or black, as specified, and are regularly graduated to 300 or 400 lbs.

The Gage should be rigidly secured either on top or in front of the firebox boiler head, and in such a position as to be protected from over-heating.

This Gage is made only in the 6 $\frac{3}{4}$ " Dial Size, in Dust-Proof Brass or Iron Cases, with threaded Knurled Brass Rings, with  $\frac{1}{4}$ " Standard Pipe Thread Connections.

In ordering, be particular to specify Style Number of Gage, whether Brass or Iron Case, and Maximum Pressure to which Dials should be graduated, also Style of Dial, silvered, or black.

Size Gage  
6 $\frac{3}{4}$ " Dials

Size  
7 $\frac{1}{4}$ " x 3" x 8"

Weight  
9 lbs.

Prices on application.



# THE ASHTON

## 6 $\frac{3}{4}$ in. Double Dial Locomotive Steam Gage

### With Electric Light Attachment

Pat. Applied For



No. 52 D. I. Style with Electric Light Attachment for Illuminating Dials

The Ashton Double Dial Locomotive Steam Gage is particularly designed for use on large oil-burning locomotives and locomotives having large fire boxes with boiler heads extending back into the cabs requiring two steam gages, one visible to the engineer from one side of the cab and one for the fireman on the other side.

The particular advantage of this gage is to eliminate the necessity of two gages for the same purpose, and also provide for the illumination of both dials, which is accomplished in a practical and compact manner.

The housing is self-contained, and is equipped with the American Railway Master Mechanics' Standard Receptacle for Lamp Bulb, which is substantially fastened to the top of the gage, and so arranged that the light is reflected downward on to the two dials in such a manner as not to interfere with the vision of the Enginemen.

This gage is made only in the 6 $\frac{3}{4}$ " dial size, in Dust-Proof Brass or Iron Cases, with threaded knurled brass rings, with  $\frac{1}{2}$ " standard pipe thread connections.

When desired, this gage is furnished without Electric Light Attachment, as illustrated and described on page 3.

Size Gage  
6 $\frac{3}{4}$ " Dials

Size  
7 $\frac{3}{4}$ " x 3 $\frac{3}{4}$ " x 11 $\frac{1}{8}$ "

Weight  
14 lbs.

Prices on application.