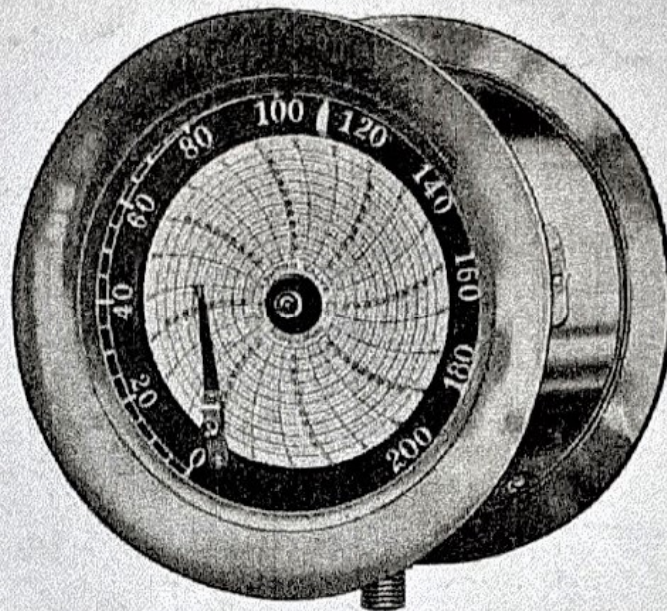


The Ashton Improved Pressure and Vacuum Recording Gages



Style No. 74. Recording and Indicating

THE ASHTON RECORDING GAGES are carefully constructed of the best materials and workmanship, the clock movement being particularly high grade and made specially for the purpose, thus insuring absolute accuracy and durability. They are adaptable for steam, water, ammonia, air or gas, and in steam boiler plants insure careful firing, steady pressure and greater efficiency and economy.

The Style No. 73 produces a daily record or chart, showing the exact variations in pressure, both day and night, giving the time and duration of all changes. The pressure line is recorded in red ink on the paper chart, which is graduated in pressure lines, and also fractions of an hour.

The Style No. 74 has the additional feature of an indicating hand and figured dial outside the recording chart, whereby the pressure can easily be read at any time.

Charts can be furnished for pressure, vacuum or compound pressure and vacuum. One year's supply of charts, ink and pen filler is furnished with each instrument.

Price List

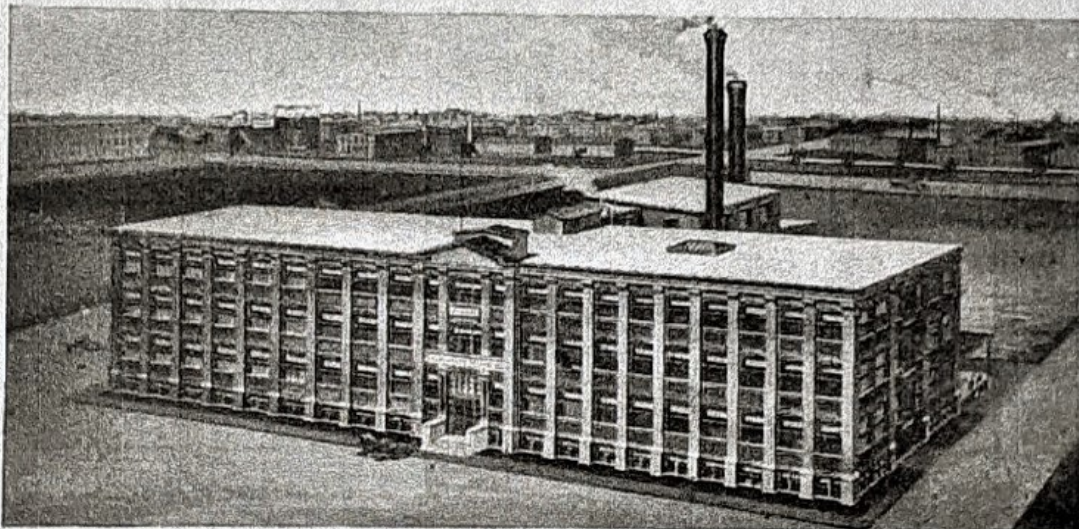
FINISH	BRASS CASE					NICKEL PLATED				
	6	6½	8½	10	12	6	6½	8½	10	12
Size, Inches										
Pressure Recording, Style No. 73 . .	\$35	\$40.00	\$50.00	\$65.00	\$85	\$36.50	\$42.00	\$52.50	\$68	\$89
Vacuum Recording	35	40.00	50.00	65.00	85	36.50	42.00	52.50	68	89
Compound Pressure and Vacuum Recording		47.50	57.50	72.50	96		49.50	60.00	75	100
Pressure Recording and Indicating, Style No. 74		47.50	57.50	72.50	96		49.50	60.00	75	100
Vacuum Recording and Indicating . .		47.50	57.50	72.50	96		49.50	60.00	75	100
Compound Pressure and Vacuum Recording and Indicating		55.00	65.00	80.00	100		57.00	67.50	83	104

THE ASHTON

Improved

POP SAFETY VALVES

**For Use on Stationary
Boilers, Superheaters, etc.**



FACTORY — EAST CAMBRIDGE, MASS.

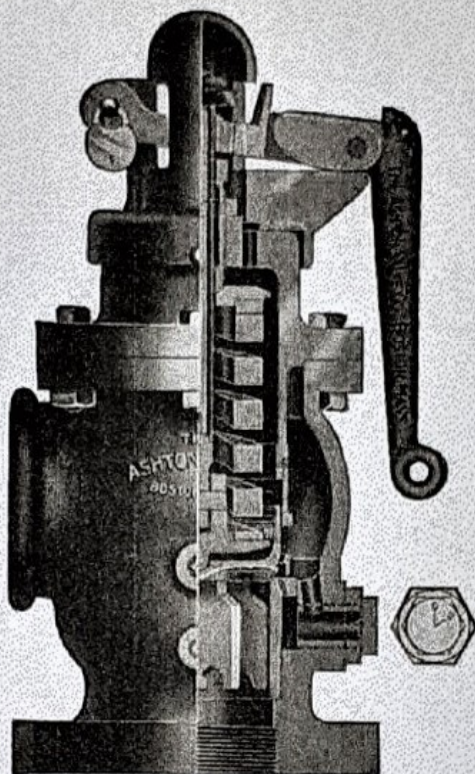
Manufactured by

THE ASHTON VALVE COMPANY

271 FRANKLIN STREET, BOSTON, MASS.
174 NORTH MARKET STREET, CHICAGO, ILL.
128 LIBERTY STREET, NEW YORK, N. Y.

The Ashton Improved Lock-Up Pop Safety Valve

For Use on Stationary Boilers



Style No. 20

OUTSIDE screw plug pop regulator, knife-edge pop-lip, encased spring, compound lifting attachment, ball-bearing pressure screw.
Spring of Jessop's Sheffield steel.

THE ASHTON LOCK-UP POP SAFETY VALVE is made with *compound lifting attachment* capable of raising the valve part off the seat, one-eighth the diameter of the valve opening; *bevel seat* at an angle of forty-five degrees; *encased spring*, protecting it from the volume of steam and preventing back pressure; *spherical or ball-bearing pressure screw* and bottom spring disk. It has full size connections to both inlet and outlet.

This valve also embodies the following *exclusive features*, well known to users of Ashton valves: *Knife-edge pop-lip*, which wears evenly with the seat, insuring an unvarying pop in long service. *Outside screw-plug pop regulator*, affording quick and ready means of adjustment of pop while pressure is on boiler and without taking valve apart.

Price List

Size Valve	2 in.	2½ in.	3 in.	3½ in.	4 in.	4½ in.	5 in.	5½ in.	6 in.
Price	\$30	\$40	\$55	\$64	\$70	\$80	\$85	\$105	\$125
Diameter Inlet Flange	7 in.	8 in.	9 in.	10 in.	10 in.	12 in.	12 in.	14 in.	14 in.

Write for Discounts

When ordering, always state highest working pressure, and whether flanged or screwed inlet connection is desired

The Ashton Improved Outside Spring Pop Safety Valve

For Use on Superheaters



Style No. 17

CAST steel body, valve part and seat bushing of solid nickel. Outside pop regulator, knife-edge pop-lip, compound lifting lever.

Spring of Jessop's Sheffield steel.

THE ASHTON OUTSIDE SPRING POP SAFETY VALVE is constructed with *body of cast steel*, with the *valve part and seat bushing* of solid nickel, and *spring* of Jessop's steel, outside the valve body, whereby it does not come in contact with the steam. It has *compound lifting attachment* easily raised by hand, and the set pressure adjustment is *locked* to prevent tampering. This valve has proven the most satisfactory on superheat installations, and can therefore be consistently guaranteed to give perfect satisfaction.

Price List

Size Valve . . .	2 in.	2½ in.	3 in.	3½ in.	4 in.	4½ in.	5 in.	5½ in.	6 in.
Price . . .	\$60	\$80	\$110	\$128	\$140	\$160	\$170	\$210	\$250
Diameter Inlet Flange .	7 in.	8 in.	9 in.	10 in.	10 in.	12 in.	12 in.	14 in.	14 in.

Write for Discounts

When ordering, always state highest working pressure, and whether flanged or screwed inlet connection is desired