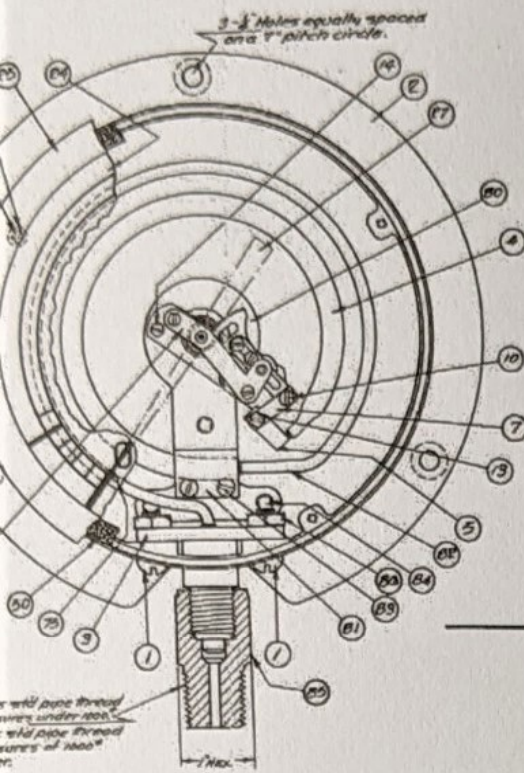


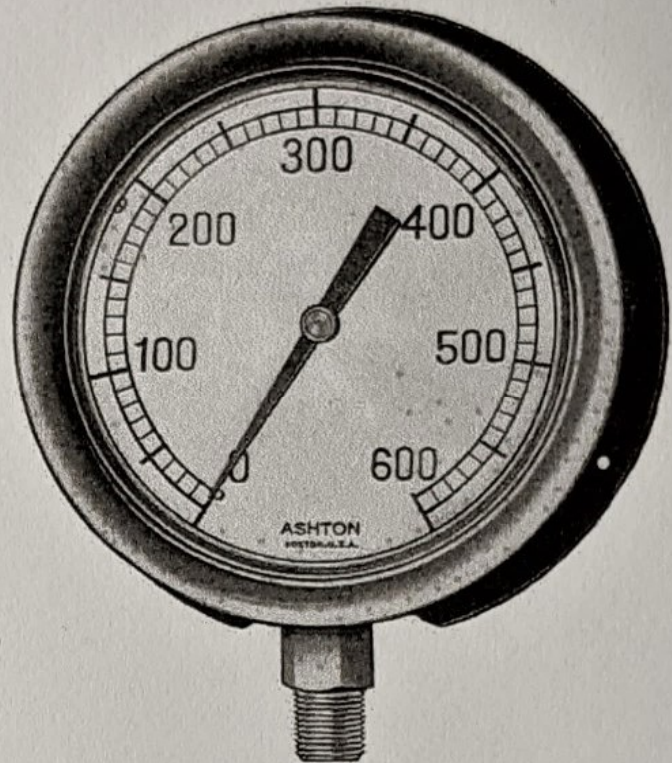
# The Ashton Industrial Gage

WELDED STEEL TUBE



noted below the construction details are the same in both 51-11 and 51-14 gages.

PART	MATERIAL
Screws	Steel
	Cast Iron
	Forged Steel
	Steel, Welded, Heat Treated
	Steel
Support	Semi, Steel
Mounting Plate	Steel
ection Tubing	Steel Tubing
Mounting Screws	Steel
ment Conn. Arm	Steel, Nitrided
ction Screw	Steel, Nitrided
onn. Screw	Steel, Nitrided
ment Screws	Steel, Chromium Plated
6" Dia. 51-11)	Steel, Enameled, 51-11
6"-12" Dia. 51-14)	Brass, Silvered, 51-14
	Cast Iron, 51-11
	Cast Brass, 51-14
Screws	Steel, Chromium Plated
	Steel
(not shown)	Steel Nitrided
et (51-11 only)	Cork
ment (Complete)	Steel
Stop Pin	Brass Nickel Plated
g Support Screws	Steel
gon Connection	Steel
et Screw Check Nut	Steel
Screw Washer (51-11)	Lead



No. 51-14

This 51-14 Ashton Gage is offered for general service in all industries. It has the same welded steel tube construction and nitrided steel movement as the 51-11 gage and is made in 6", 8½", 10" and 12" sizes. Regular style cases and rings are used, also the standard Ashton dial of heavy brass, with circular silver finish and deep graduations and figures, black filled.

Standard accuracy is one-half per cent at working point with one and one-half per cent at all other points above first five per cent of scale.

Test Gage accuracy of one-half of one per cent over full scale range can be furnished.

*No Cocks are furnished.*

PRICES ON APPLICATION

ecting Tubing (82) and Spring (4) are with oil. An internal siphon effect is thus uced, as is also a dampening effect when ected to pulsating pressures.

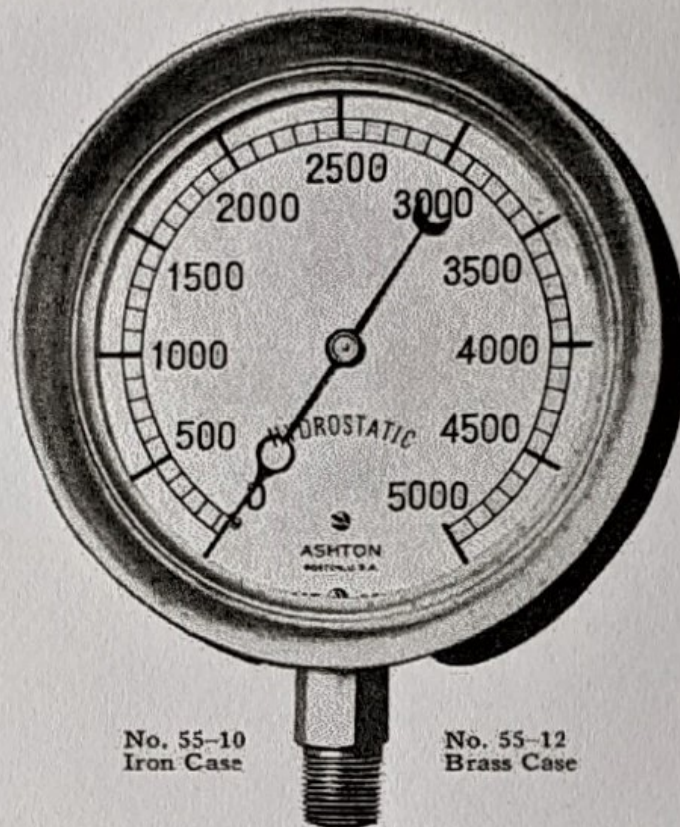
oints are WELDED. No chance for leaks o fire hazard.

is fume and dust proof.

dard available enamel dials are 100-200-600-1000.



# ASHTON HYDRAULIC GAGE



No. 55-10  
Iron Case

No. 55-12  
Brass Case

The Pressure Element or Spring is made from solid bar Chrome Vanadium Steel carefully bored, turned and formed, heat treated and tempered and processed to prevent corrosion. Other Details of Construction follow the rigid Ashton Standards that have for years demonstrated the built-in value for which all Ashton Products are so favorably known throughout industry.



*Manufactured Exclusively by*

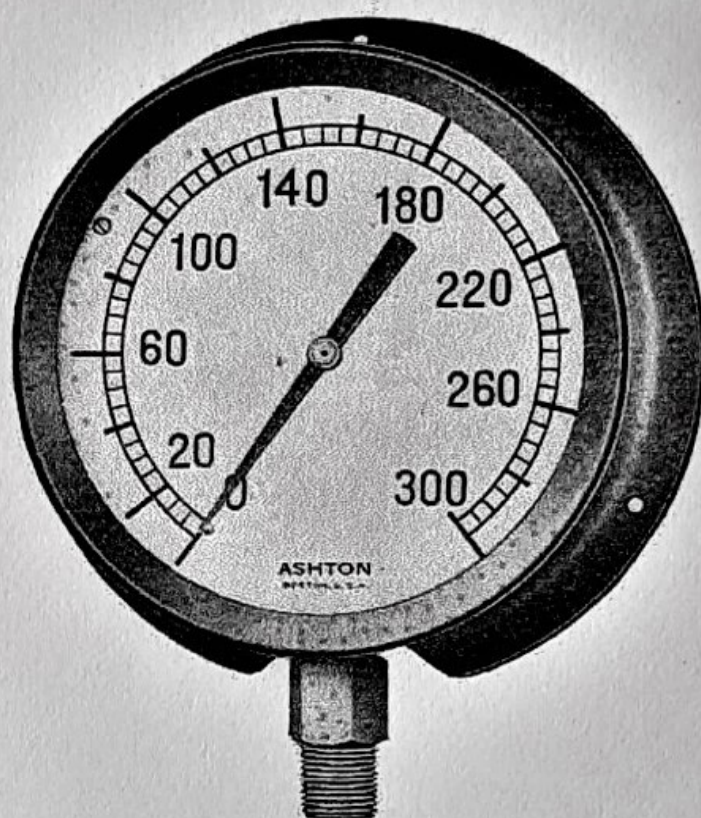
**THE ASHTON VALVE COMPANY**  
**161 FIRST STREET, CAMBRIDGE, BOSTON, MASS.**

*Distributors in Principal Cities*



MAR 11 1938

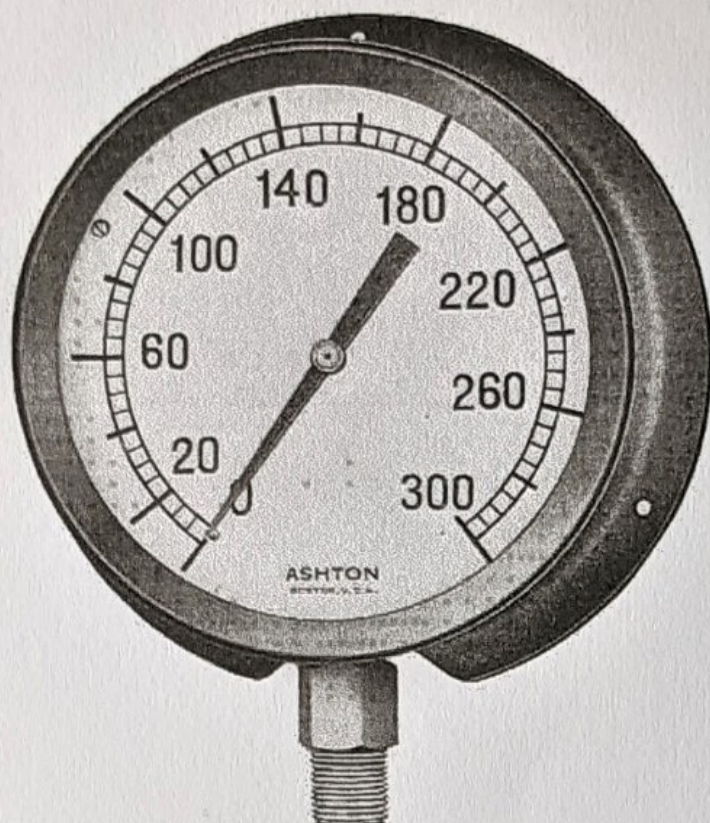
# ASHTON STEEL TUBE GAGES





# The Ashton Oil Industries Gage

WELDED STEEL TUBE



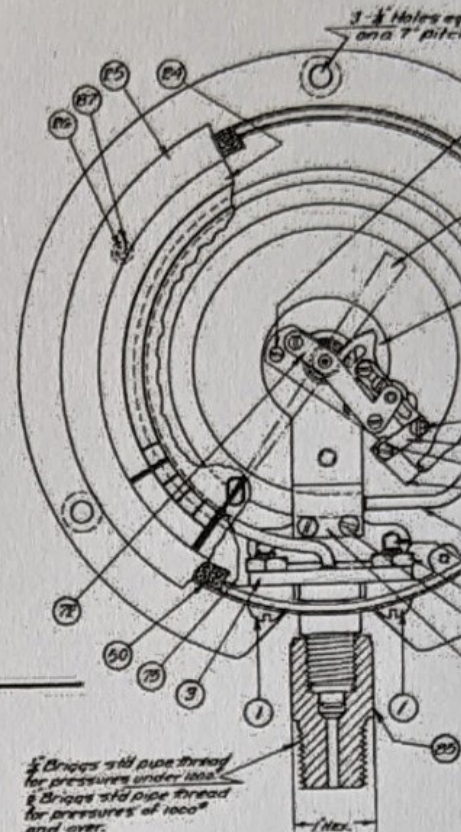
No. 51-11

**I**N the Oil Industry, from the producing fields through the pipe lines to refineries and on to sales distribution are many points where the use of a pressure gage is necessary. For many of these applications the standard type gage of bronze tube construction is not best adapted.

On the other hand the use of a gage having construction features making it equally well adapted to all of these possible service conditions offers opportunity for economy and of interchangeability, which merits consideration. The Ashton 51-11 gage, made only in 6-inch size, with welded steel tube and nitrided steel movement, is offered for this general Oil Industry service.

The accompanying sectional view and table give general construction details. We wish however to particularly emphasize the following.

1. Spring (4) has arc of nearly 320°, giving maximum tip travel with low stress on tube, a feature tending toward maintained accuracy over a long period of time.



Except as noted below the construction in both 51-11 and 51-14

No.	PART	
1	Socket Screws	St
2	Case	C
3	Socket	Fi
4	Spring	St
5	Tip	St
80	Spring Support	St
81	Spring Mounting Plate	St
82	Connection Tubing	St
83	Spring Mounting Screws	St
7	Movement Conn. Arm	St
10	Connection Screw	St
13	Tip Conn. Screw	St
14	Movement Screws	St
24	Dial (6" Dia. 51-11) (6"-12" Dia. 51-14)	St
25	Ring	C
26	Dial Screws	St
27	Hand	St
34	Glass (not shown)	
50	Gasket (51-11 only)	C
72	Movement (Complete)	
75	Hand Stop Pin	
84	Spring Support Screws	St
85	Hexagon Connection	St
86	Socket Screw Check Nut	St
87	Dial Screw Washer (51-11)	L

2. Connecting Tubing (82) is filled with oil. An internal seal is produced, as is also a dampener connected to pulsating pressure.
3. All joints are WELDED. No fire hazard.
4. Case is fume and dust proof.
5. Standard available enamel for 300-600-1000



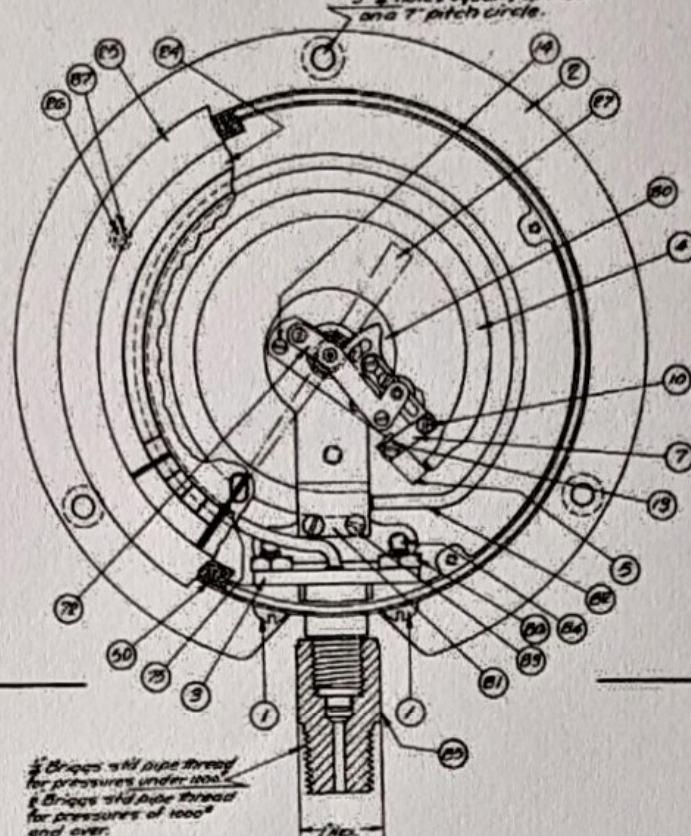


producing fields  
series and on to  
points where the  
r. For many of  
type gage of  
best adapted.

age having con-  
ly well adapted  
conditions offers  
of interchange-  
n. The Ashton  
ize, with welded  
ment, is offered  
ce.

view and table  
We wish how-  
e following.

0°, giving maxi-  
on tube, a fea-  
d accuracy over



Except as noted below the construction details are the same in both 51-11 and 51-14 gages.

No.	PART	MATERIAL
1	Socket Screws	Steel
2	Case	Cast Iron
3	Socket	Forged Steel
4	Spring	Steel, Welded, Heat Treated
5	Tip	Steel
80	Spring Support	Semi, Steel
81	Spring Mounting Plate	Steel
82	Connection Tubing	Steel Tubing
83	Spring Mounting Screws	Steel
7	Movement Conn. Arm	Steel, Nitrided
10	Connection Screw	Steel, Nitrided
13	Tip Conn. Screw	Steel, Nitrided
14	Movement Screws	Steel, Chromium Plated
24	Dial (6" Dia. 51-11) (6"-12" Dia. 51-14)	Steel, Enameled, 51-11 Brass, Silvered, 51-14
25	Ring	Cast Iron, 51-11 Cast Brass, 51-14
26	Dial Screws	Steel, Chromium Plated
27	Hand	Steel
34	Glass (not shown)	Steel Nitrided
50	Gasket (51-11 only)	Cork
72	Movement (Complete)	Brass, Nickel Plated
75	Hand Stop Pin	Steel
84	Spring Support Screws	Steel
85	Hexagon Connection	Steel
86	Socket Screw Check Nut	Steel
87	Dial Screw Washer (51-11)	Lead

2. Connecting Tubing (82) and Spring (4) are filled with oil. An internal siphon effect is thus produced, as is also a dampening effect when connected to pulsating pressures.
3. All joints are WELDED. No chance for leaks — No fire hazard.
4. Case is fume and dust proof.
5. Standard available enamel dials are 100-200-



This 51-1  
service in al  
steel tube c  
ment as the  
10" and 12"  
used, also th  
with circular  
and figures,

Standard  
ing point w  
other points

Test Gage  
over full sca