

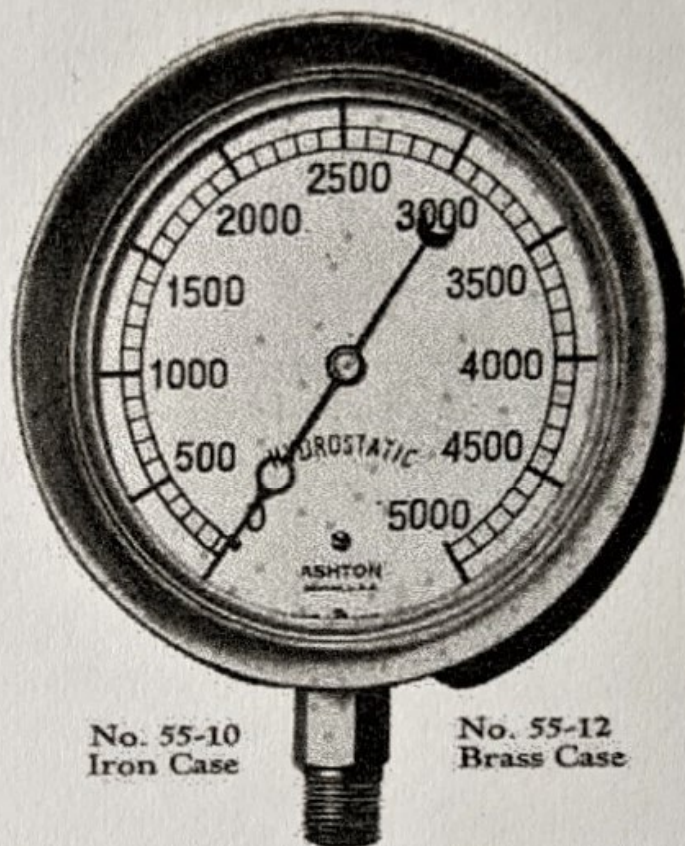
REFERENCE

CATALOGUE LIBRARY

NOV

6 1936

ASHTON HYDRAULIC GAGE



No. 55-10
Iron Case

No. 55-12
Brass Case

The Pressure Element or Spring is made from solid bar **Chrome Vanadium Steel** carefully bored, turned and formed, heat treated and tempered and processed to prevent corrosion.

Other Details of Construction follow the rigid **Ashton Standards** that have for years demonstrated the **built in** value for which all **Ashton Products** are so favorably known throughout industry.



Manufactured Exclusively by

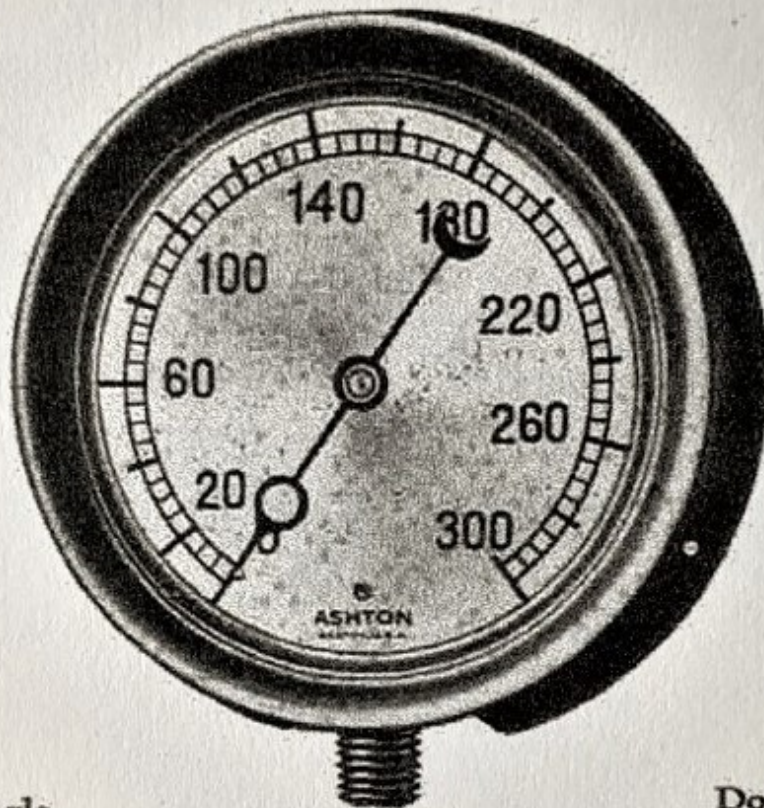
THE ASHTON VALVE COMPANY

161 FIRST STREET
CAMBRIDGE, BOSTON, MASS.

Distributors in Principal Cities

As 39 109

ASHTON GAGES



Single
Spring
Pressure Gage
No. 51-10 Iron
No. 51-12 Brass

Double
Spring
Pressure Gage
No. 52 LBD
Iron or Brass

Built for Continued Accuracy
Old Time Value at
Moderate Cost



ASHTON GAGES

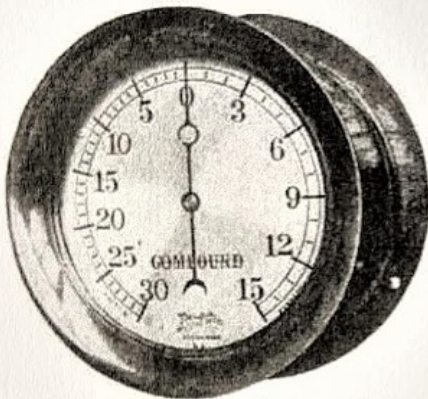
ASHTON STANDARD CONSTRUCTION



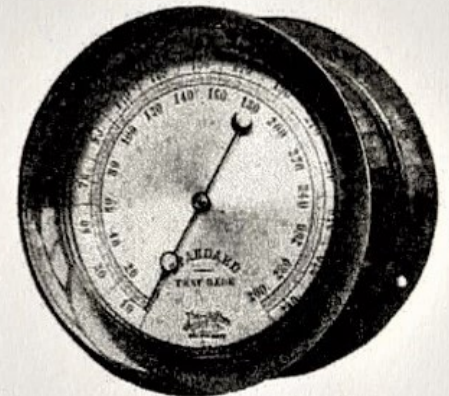
No. 53. Vacuum Gage



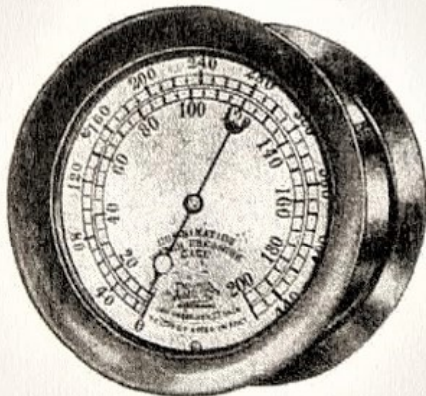
No. 57. Ammonia Gage



No. 54. Pressure-Vacuum Gage



No. 59. Standard Test Gage



No. 56. Water Pressure Gage

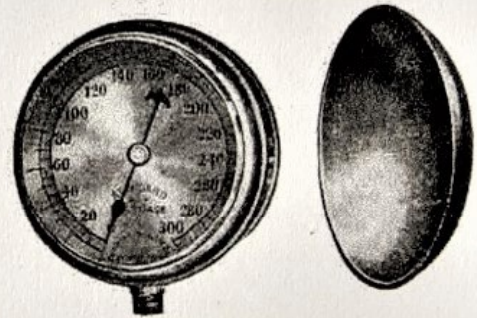
CASE: Cast iron or brass, heavy, rigid, durable.

MOVEMENT: Broad faced sector, phosphor bronze; pinions and arbor, nickel silver; hair spring, phosphor bronze; bushings, phosphor bronze.

SPRING OR PRESSURE ELEMENT: Seamless drawn bronze tubing, subjected to overpressure test and seasoned to relieve stresses set up in forming.

DIAL: Heavy brass and for the larger sizes is hand graduated; graduations and figures are deep cut and filled with enamel; circular silver finish is used.

RING AND GLASS: Heavy cast brass of either threaded or slip-on type is used on larger size gages; spun brass ring is used on smaller sizes. All glass double thick.



No. 59A. Pocket Test Gage

DSI