

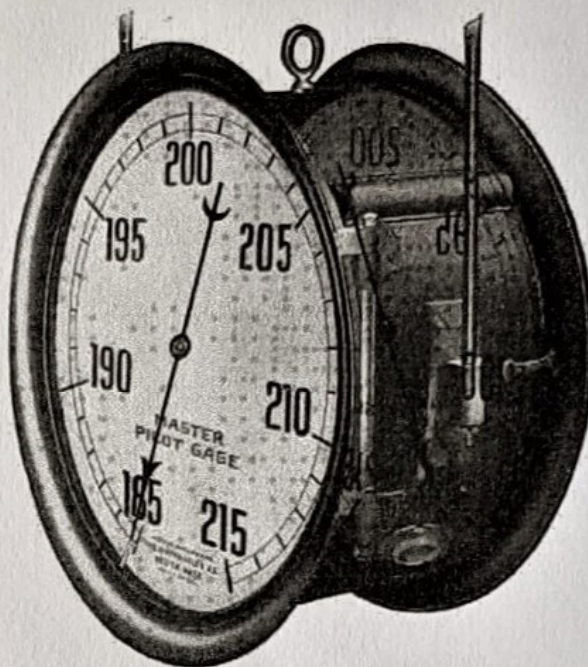
ASHTON MASTER PILOT PRESSURE GAGE

WITH DOUBLE DIALS

The No. 100 A. Gage is identical in construction with the No. 100 A.C. described on page 2, but the dials are marked to show pressures in actual instead of symbolic figures and the prices are the same, as shown in the list below.

Special large size siphon, filled with water before connecting, must be used. For smaller non-illuminated pilot gages see page 6. For range of pressure and method of illumination see page 2. Also furnished non-illuminated. Connection is $\frac{1}{2}$ -inch pipe size, male.

Orders should specify style number of gage, size, illuminated or non-illuminated dials, range of pressure, maximum boiler pressure, style of case and ring, and static head if any.



No. 100 A.
Patented and Trademark Registered

*LIST PRICES Nos. 100 A. and 100 A.C. (Including Hand Puller)

SIZE, INCHES	40		30		24		18	
	<i>Illu- minated</i>	<i>Non-Illu- minated</i>	<i>Illu- minated</i>	<i>Non-Illu- minated</i>	<i>Illu- minated</i>	<i>Non-Illu- minated</i>	<i>Illu- minated</i>	<i>Non-Illu- minated</i>
Iron Case, with Polished Brass or Aluminum Rings	\$850	\$785	\$560	\$520	\$370	\$345	\$320	\$300
Brass Case, with Polished Brass or Aluminum Rings	990	950	675	635	470	440	390	370
Add for Nickel-Plated Rings	\$25.00		\$15.00		\$10.00		\$8.00	

SUBJECT TO DISCOUNT

We particularly recommend Aluminum Rings for the 40 and 30-inch sizes to reduce weight. When specified, rings will be furnished with dull black hard rubber finish, without extra charge.

*An extra charge of \$10.00 net for double dial gages and \$5.00 net for single dial gages, will be made for pressures exceeding 500 lbs. on both Master Pressure and Master Pilot Pressure Gages. Also an additional charge will be made when the range is less than those given on page 2.

ASHTON MASTER PRESSURE GAGE

This Gage is similar to the Master Pilot Gages with large dials but shows all the graduations and figures from zero to the maximum. It is for use in large power houses where it is desired to have dials with prominent graduations and figures, by which the boiler pressure may be observed from a distance. Dials should be graduated to double the working pressure so hand will be vertical.

For method of illumination see page 2. Also furnished non-illuminated.

All Master Pressure and Pilot Gages have a lug on each side of the case for supporting rods, an eye bolt at the top of the case for convenience in installation, hinged rings for convenience in adjusting and a hand calibrating adapter as described on page 2.

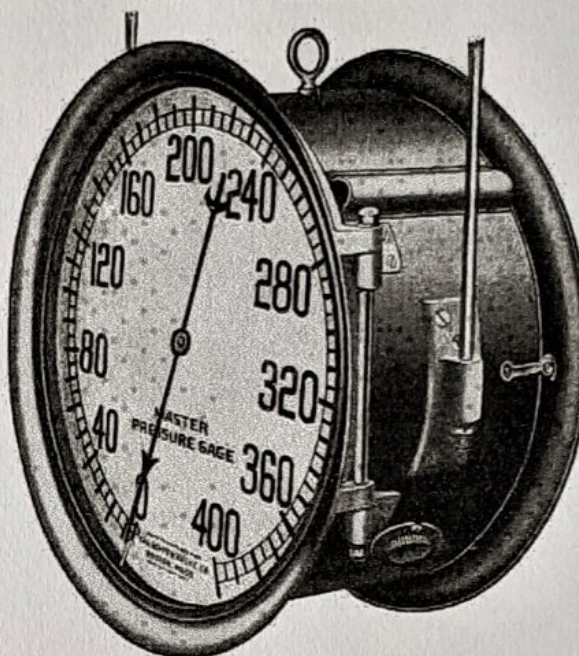
Dials are set in felt channels which act as cushions preventing breakage from ordinary causes and as seals against entrance of dust.

Special large siphon, filled with water before connecting, must be used. Connection is $\frac{1}{2}$ -inch pipe size, male.

For smaller illuminated gage see page 127 in Catalogue No. 28.

Orders should specify style number of gage, size, illuminated or non-illuminated dials, maximum pressure, style of case and ring, and static head if any.

WITH DOUBLE DIALS



NO. 100

Patented and Trademark Registered

Ventilating holes, covered to exclude dirt, prevent overheating if recommended size lamps are used.

*LIST PRICES (Including Hand Puller)

SIZE, INCHES	40		30		24		18	
	<i>Illu- minated</i>	<i>Non-Illu- minated</i>	<i>Illu- minated</i>	<i>Non-Illu- minated</i>	<i>Illu- minated</i>	<i>Non-Illu- minated</i>	<i>Illu- minated</i>	<i>Non-Illu- minated</i>
Iron Case, with Polished Brass or Aluminum Rings	\$800	\$760	\$450	\$410	\$340	\$315	\$290	\$270
Brass Case, with Polished Brass or Aluminum Rings	940	900	565	525	440	410	360	340
Add for Nickel-Plated Rings	\$25.00		\$15.00		\$10.00		\$8.00	

SUBJECT TO DISCOUNT

We particularly recommend Aluminum Rings for the 40 and 30-inch sizes, to reduce weight. When specified, rings will be furnished with dull black hard rubber finish, without extra charge.

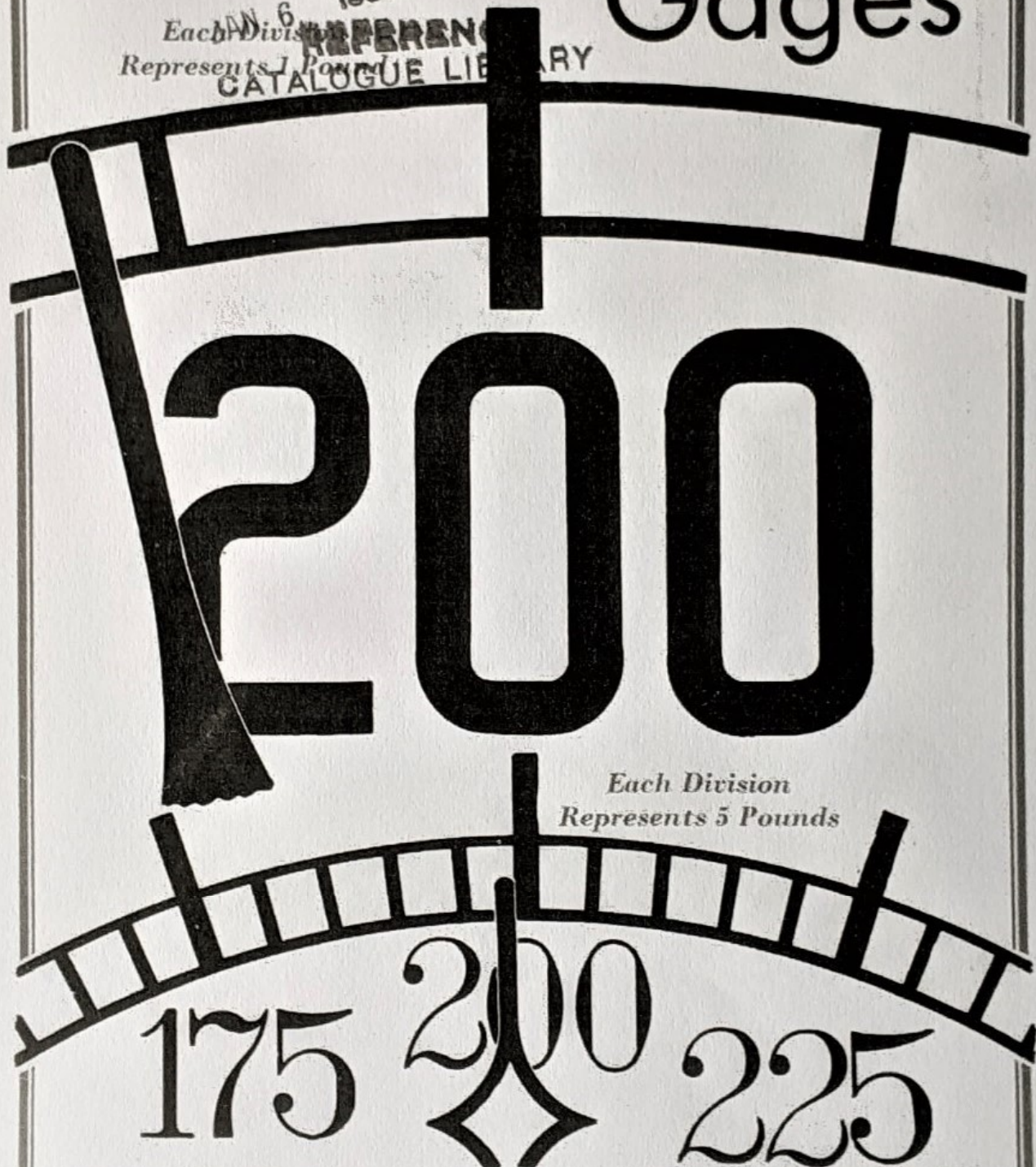
* For extra charge for pressures over 500 lbs. see page 3.

Ashton

MASTER PRESSURE AND
MASTER PILOT PRESSURE

Gages

1931
Each Division
Represents 1 Pound
REFERENCE
CATALOGUE LIBRARY



Each Division
Represents 5 Pounds

Facsimile of 24-inch Master Pilot and 12-inch ordinary dials showing relative sizes of divisions and ease of detecting variations in pressure on the pilot dial. Both are for a working pressure of 200 pounds and both hands indicate the same pressure.

The Ashton Valve Company

Pop Safety and Relief Valves, Pressure and Vacuum Gages

161-179 FIRST STREET CAMBRIDGE, BOSTON, MASS.
NEW YORK CHICAGO SAN FRANCISCO

ASHTON MASTER PILOT PRESSURE GAGE

The Ashton Master Pilot Gage is designed for installation in large power plants. By its use the steam pressure indicated may be seen from a considerable distance. It is intended to be connected direct to the main steam header, for use as the firing gage for the entire battery of boilers. The limited dial graduation, shown in the above cut, with the working pressure at top of dials, permits of unusually coarse graduations and large figures, so that the slightest variation of pressure may be readily observed. This is illustrated by the reproduction on page 1, showing the relative size of divisions on 24-inch pilot and 12-inch ordinary dials.

The economy in operation of a power plant equipped with this pilot gage is obviously apparent, when it is considered that standard size boiler pressure gages with their smaller dials, and necessarily finer graduations, are not easily read, do not show small pressure fluctuations, and indicate only boiler pressure and not the more important pressure in the main header.

All Master Pilot Pressure Gages have special multiple tube and operating mechanism. The Hand Calibrating Adapter permits adjusting the hand to the correct pressure while the gage is in service and without removing the hand. If the location of the gage causes a static head of over 10 feet, we should be informed of the amount and we will set the hand to bring any later adjustment within range of the adapter.

The 0 at the top of dial represents the working pressure. The dials are regularly graduated through 15 lbs. LOW and 15 lbs. HIGH up to 250 lbs. working pressure. For higher pressures we recommend the following minimum ranges: 30-0-30 from 251 to 400 lbs. working pressure; 50-0-50 from 401 to 600 lbs. working pressure.

The A.C. type of dial is suitable for general use as the zero graduation at the vertical center may represent any desired main steam header pressure, but the linkage must be readjusted if pressure is changed, and new tubes will be required if change is great.

All Master Pressure and Master Pilot Pressure Gages have heavy translucent glass dials. Illumination is by electric lamps, spaced around the inside of the case. Style P or G, Mill Type Lamps of not to exceed 25W, should be used, as the heat from larger lamps may affect the accuracy of the gage.

Electric connection is made to flush receptacle on outside of case. Also furnished non-illuminated.

Special large size siphon, filled with water before connecting, must be used.

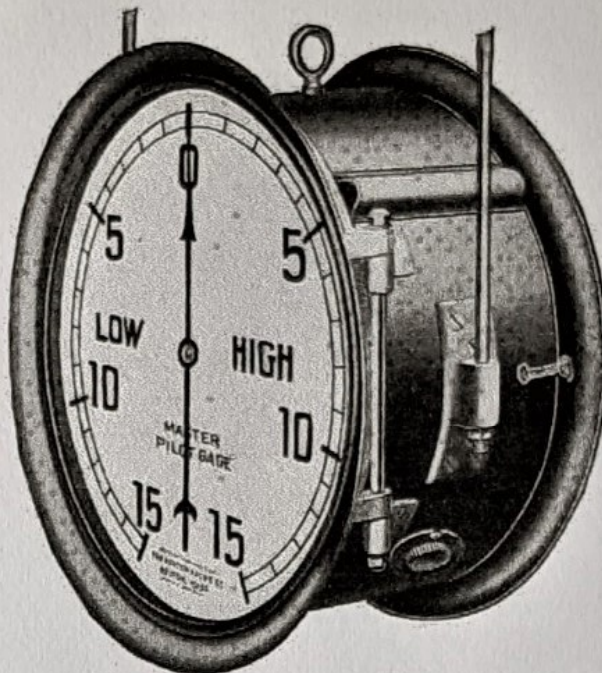
Connection is $\frac{1}{2}$ " pipe size, male.

For smaller non-illuminated pilot gages see page 6.

Orders should specify style number of gage, size, illuminated or non-illuminated dials, range of pressure, maximum boiler pressure, style of case and ring, mean working pressure represented by 0, and static head if any.

List prices are same as No. 100A. shown on page 3.

WITH DOUBLE DIALS



No. 100 A.C.

Patented and Trademark Registered