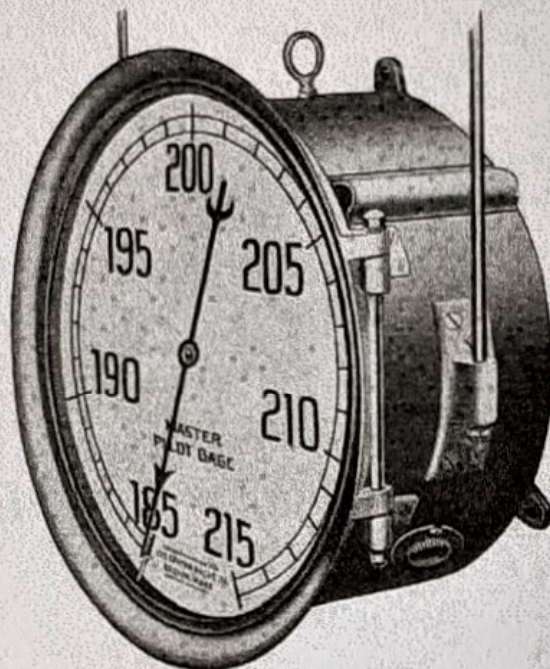


The Ashton Master Pressure and Pilot Gage

With Single Dial



No. 101A

(Patents Pending and Trade Mark Registered)

The Ashton No. 101-A Master Pilot Pressure Gage, above illustrated, is equipped with special multiple tube and operating mechanism, similar to the No. 100-A Style, page two, but has single dial with widely spaced graduations and correspondingly prominent figures.

When this gage is desired with dial showing all the graduations and figures from zero to the maximum, similar to the No. 100 Style, page three, it should be ordered as Style No. 101.

These gages are furnished with either non-illuminated dials or with dials that are illuminated by electric lamps, equally spaced around a bracket inside the case, with Hubbel flush receptacles. The illuminated dial may be observed from a distance.

These gages are provided with brackets on each side of the case for supporting rods; eye bolt at the top of case for raising or lowering into position; with hinged rings for convenience in making adjustments, also with hand adaptor.

Orders should specify style number of gage, size, and whether illuminated or non-illuminated dial is desired.

PRICE LIST

No. 101 Style (With Standard Graduations)

	With 18-inch Single Dial		With 24-inch Single Dial		With 30-inch Single Dial		With 40-inch Single Dial	
	Illuminated	Non-Illuminated	Illuminated	Non-Illuminated	Illuminated	Non-Illuminated	Illuminated	Non-Illuminated
Iron Case, with Polished Brass or Aluminum Ring	\$175	\$150	\$235	\$200	\$400	\$360	\$610	\$570
Brass Case, with Polished Brass or Aluminum Ring	200	185	270	250	475	435	685	645

No. 101A Style (With Pilot Graduations)

Iron Case, with Polished Brass or Aluminum Ring	\$190	\$165	\$250	\$215	\$420	\$380	\$640	\$600
Brass Case, with Polished Brass or Aluminum Ring	215	200	285	265	495	455	715	675

For Nickel Plated Ring add to above list prices:

18-inch
\$4.00

24-inch
\$5.00

30-inch
\$7.50

40-inch
\$12.50

Subject to Discount

We particularly recommend Aluminum Rings for the 30-inch and 40-inch size gages, to reduce the weight. When so specified rings will be furnished with dull black hard rubber finish, without extra charge.

Ref. 33

The Ashton Master Pressure and Master Pilot Gages

With large
diameter single
or double,
illuminated or
non-illuminated
dials, with wide
graduations and
extra large
figures



Specially
adapted for
applications in
large boiler and
engine rooms,
to increase
efficiency in
power plant
operation

No. 100AC

(Patents Pending and Trade Mark Registered)

The Ashton Master Pilot Gage illustrated above is identical in construction with the No. 100A and 101A style Gages described on pages 2 and 4. The A C type of dial is suitable for general use as the zero graduation at the vertical center may represent any desired main steam header pressure.

Standard Dial Graduations 15-0-15 lbs.
30-0-30

Orders should specify size of Gage, finish of case, single or double, illuminated or non-illuminated dials, also mean working pressure for the zero graduation.

List Prices same as No. 100A and 101A style Gages, pages 2 and 4.

THE ASHTON VALVE COMPANY

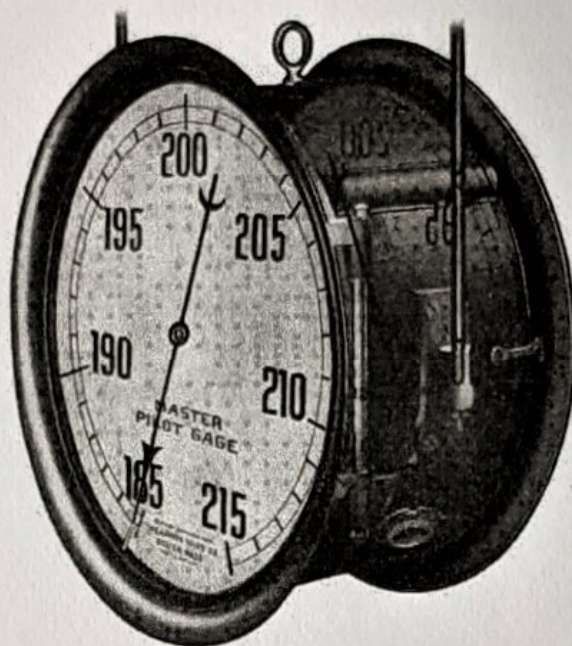
161 - 179 First Street, Cambridge

Boston, Mass.

New York, N. Y. Chicago, Ill. San Francisco, Cal.

The Ashton Master Pilot Pressure Gage

With Double Dials



No. 100A

(Patents Pending and Trade Mark Registered)

The Ashton Master Pilot Gage is designed for installation in large power plants. By its use the steam pressure indicated may be readily seen at a distance from any part of the boiler room. It is intended to be connected direct to the main steam header, for use as the firing gage for the entire battery of boilers. The limited dial graduation, similar to that shown in the above cut, with the highest working pressure at top of dials, permits of unusually coarse pressure graduations and large size dial figures, so that the slightest variation of pressure may be promptly and readily observed.

The economy in operation of a power plant equipped with this Pilot Gage is obviously apparent, when it is considered that standard size boiler pressure gages with their smaller diameter dials, and necessarily finer graduations, are not easily read, do not show sensitive pressure fluctuations, and indicate only boiler pressure and not the more important pressure in the main header.

This Gage has a bracket on each side of the case for supporting rods to hold gage securely in position. There is also an eye bolt at the top of the case for convenience in raising or lowering into place. All Master Pressure and Pilot Gages are provided with hinged rings for convenience in making adjustments to gage.

The illuminated dial style, as commonly used, has semi-transparent glass dials. Gages that are located where there is sufficient exterior illumination are furnished with non-illuminated dials.

PRICE LIST

	With 18-inch Double Dials		With 24-inch Double Dials		With 30-inch Double Dials		With 40-inch Double Dials	
	Illuminated	Non-Illuminated	Illuminated	Non-Illuminated	Illuminated	Non-Illuminated	Illuminated	Non-Illuminated
Iron Case, with Polished Brass or Aluminum Rings	\$320	\$300	\$370	\$345	\$560	\$520	\$810	\$770
Brass Case, with Polished Brass or Aluminum Rings	390	370	470	440	675	635	950	910

For Nickel Plated Rings add to above list prices:

18-inch
\$8.00

24-inch
\$10.00

30-inch
\$15.00

40-inch
\$25.00

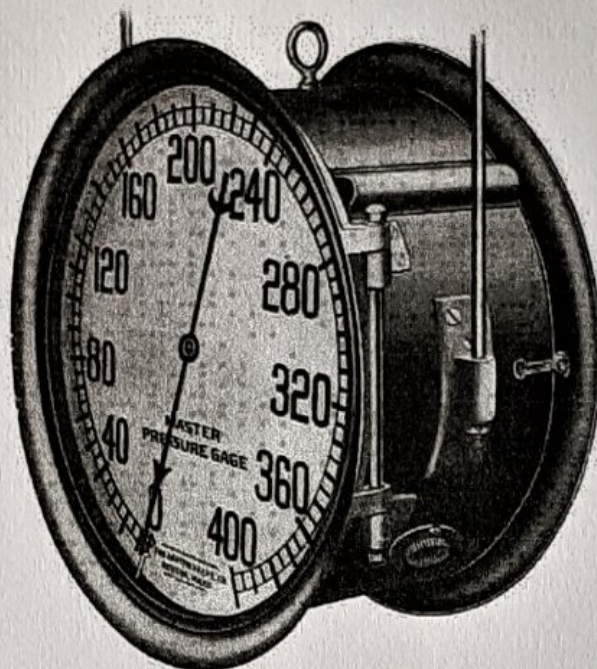
Subject to Discount

We particularly recommend Aluminum Rings for the 30-inch and 40-inch size gages, to reduce the weight. When so specified rings will be furnished with dull black hard rubber finish, without extra charge.

DSI

The Ashton Master Pressure Gage

With Double Dials



No. 100

(Patents Pending and Trade Mark Registered)

This style gage is similar to the Master Pilot Gage on page 2, with large diameter dials but showing all the graduations and figures from zero to the maximum.

It is the best practice to graduate the dials to double the maximum working pressure, so that the hand will indicate the working pressure in a vertical position.

This gage is for use in large power houses where it is desired to have the dials with prominent graduations and figures, by which the boiler pressure may readily be observed from a distance.

For poorly lighted boiler houses and for service during the night, this gage is provided with heavy semi-transparent glass dials. These dials are illuminated by electric lamps, so spaced around the inside of the case as to avoid objectionable shadows. Electric connection is made to Hubbel flush receptacle on outside of case. When the illuminating feature is not desired, the gage is furnished with non-illuminated dials.

All Master Pressure and Pilot Gages are provided with hinged rings for convenience in making adjustments to gage. Each gage is fitted with a hand calibrating adaptor by means of which the indicating hand may be properly adjusted to the correct pressure while the gage is in service and without the necessity of removing the hand.

These gages are usually suspended in the center of boiler room by use of vertical rods connected to the bracket on each side of the case and an eye bolt is fitted to top of gage so that it may be conveniently handled during installation.

PRICE LIST

	With 18-inch Double Dials		With 24-inch Double Dials		With 30-inch Double Dials		With 40-inch Double Dials	
	Illu-minated	Non-Illu-minated	Illu-minated	Non-Illu-minated	Illu-minated	Non-Illu-minated	Illu-minated	Non-Illu-minated
Iron Case with Polished Brass or Aluminum Rings	\$290	\$270	\$340	\$315	\$520	\$480	\$760	\$720
Brass Case with Polished Brass or Aluminum Rings	360	340	440	410	635	595	900	860

For Nickel Plated Rings add to above list prices:

18-inch
\$8.00

24-inch
\$10.00

30-inch
\$15.00

40-inch
\$25.00

Subject to Discount

We particularly recommend Aluminum Rings for the 30-inch and 40-inch size gages, to reduce the weight. When so specified rings will be furnished with dull black hard rubber finish, without extra charge.